

ULTIMATE MIXING EFFICIENCY WITH VARIOUS OPTIONS

HIGH PRESSURE FOAMING MACHINE





DUT KOREA is specialist of PU machine and offers high pressure mixing head, metering pump, foaming machine and all kinds of PU solutions.

DUT KOREA

DUT has established in 1992 and became a leading company as manufacturer & specialist in field of High Pressure PU Solutions including Injection Machine, Mixing Head, Metering Pump and all kinds of PU Applications in Korea. DUT started PU business with high quality of Mixing Head which is core of PU technology then expanded to all the PU applications. DUT's market share of this field is getting bigger year by year and customer's feedback of satisfaction for the DUT's quality and services makes next orders.

Solution for Polyurethane

DUT's slogan is "Solution for Polyurethane". It means we do not just sell the product but care of products until customer's satisfaction. Our technology of polyurethane is started from customer's need and finished by their satisfaction.

Foaming Machine

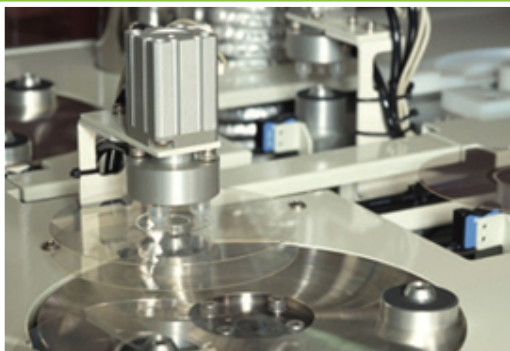
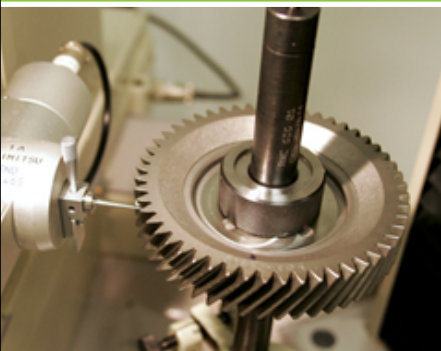
DUT's foaming machine has ultimate compatibility.

As DUT KOREA manufactures most of core parts for the foaming machine, All the parts including mixing head, pump and S/D valve for the machine designs organically.

Also simple and stable design help you to maintain and repair easily and self-developing PLC makes you to control the machine pleasantly.

Huge Sales Network

Sales Department has huge international network for 56 countries including USA, Germany, Italy, UK, Poland, Hungary, Egypt, China, Mexico, Japan, India, Iran, Thailand, New Zealand, Brazil, and so on, so customers are able to easy order by the DUT's network.



DUT KOREA introduces your premium foaming machine.

DUT KOREA's products are focused on operators and offers optimized machine. And the innovative technology on accumulation of experiences are supplied as high compatibility for the entire line then it gives you bigger competitiveness.

Compatibility

Main parts for foaming machine are designed by DUT own self and applied to entire machine so each parts have ultimate compatibility and it makes high stable foaming machine 'Mamix'

Convenience

'MAMIX' offers various type of options depending on customer's needs. Also design for the machine excludes unnecessary parts to make simplification so operators use machine pleasantly and conveniently.

Economical

Customers are able to assemble through various options so unnecessary parts can be excluded to make economical machine.

INDEX

INTRODUCTION OF 'MAMIX'

FEATURES

CONSTRUCTION OF 'MAMIX'

ADJUSTIING RANGE

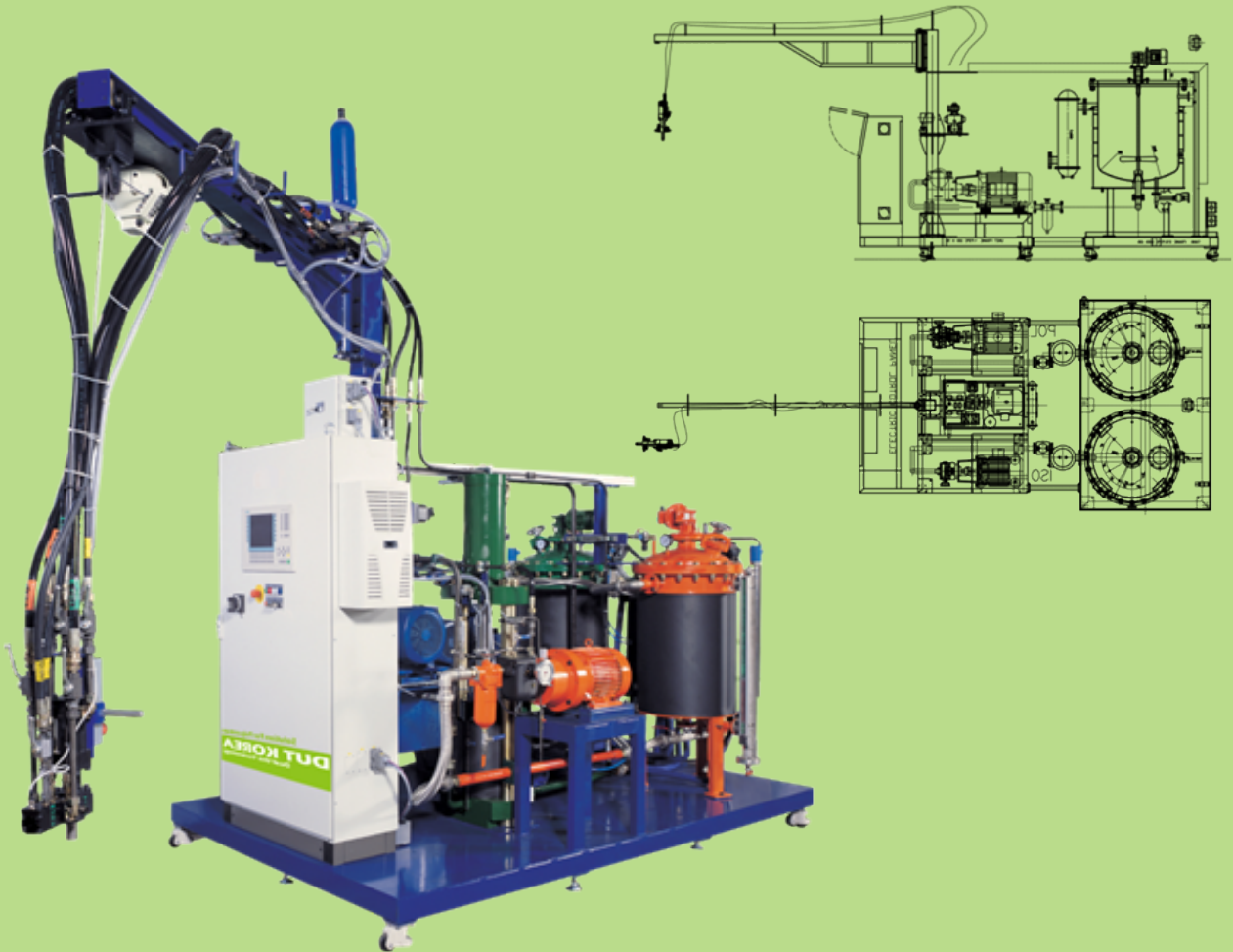
PRODUCT PICTURES

REFERENCES

INTRODUCTION OF 'MAMIX'

DUT's foaming machine has ultimate compatibility.

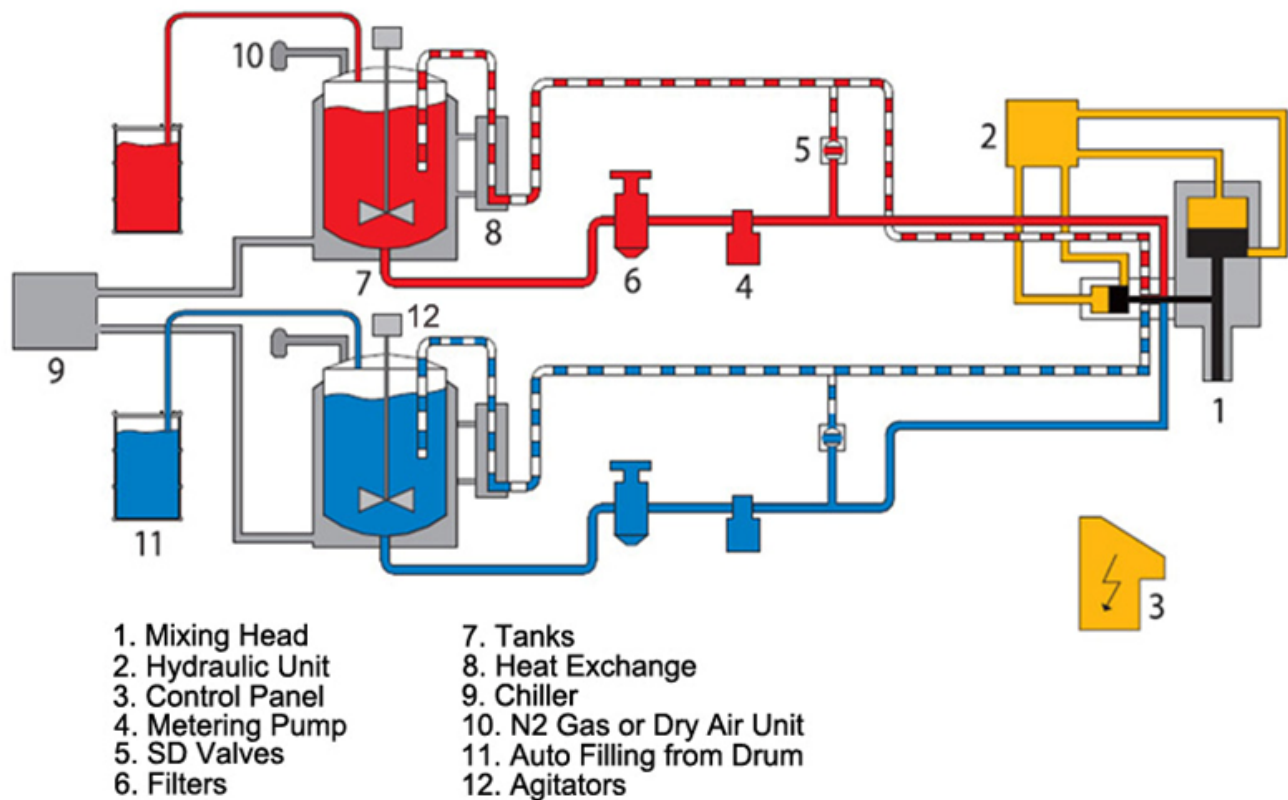
As DUT KOREA manufactures most of core parts for the foaming machine, All the parts including mixing head, pump and S/D valve for the machine designs organically. Also simple and stable design help you to maintain and repair easily and self-developing PLC makes you to control the machine pleasantly.



FEATURES

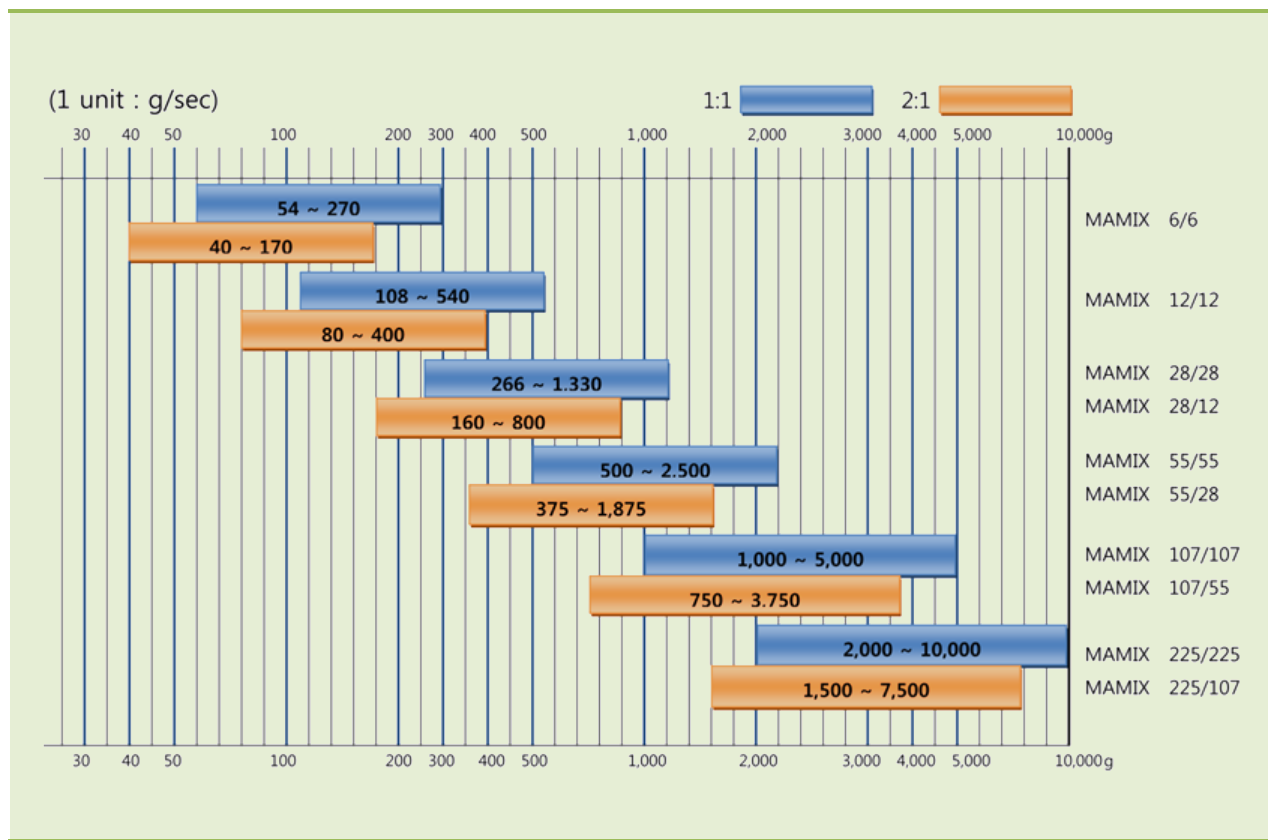
- Changeable options for customer's various needs
- High compatibility & Stable operating
- Fine control for mixing Ratio and Auto processing
- Wide mixing ratio
- Accurate injection time
- High metering accuracy and Easy operating
- High durability and Easy maintenance
- Economical price

CONSTRUCTION OF 'MAMIX'



1. **Mixing Head:** Core part of PU injection system, it mixes raw materials.
2. **Hydraulic Unit:** It supplies all kinds of operating powers for Mixing Head.
3. **Control Panel:** Operator adjusts data values on the touch screen.
4. **Metering Pump:** It generates high pressure and accuracy control for output is able to inject.
5. **SD Valves:** High pressure switching valve, it is worked by air pressure, (open/closed)
6. **Filter:** It filters unnecessary substance.
7. **Tanks:** It basically contains POL and ISO.
8. **Heat Exchanger:** For rapid cooling from recirculation the heat exchanger has equipped.
9. **Chiller:** To maintain optimal temperature, each tank has connected to chiller.
10. **N2 Gas or Dry Air Unit:** To apply stable raw material from each tank, it helps to make optimal pressure.
11. **Auto Filling from Drum:** It applies raw material to tank automatically.
12. **Agitators:** It makes stable temperature for optimal condition of raw material in Tank.

ADJUSTIING RANGE



PRODUCT PICTURES



TANKS



CONTROL PANEL



MIXING HEAD



METERING PUMP(DMP)



FILTER



CHILLER

Reference list

Buyer	Application	Delivery Date
Self-Arrangement & Mixing Head Test	Rigid/Semi, Rigid/Flexible Foaming Test	2003/04
Dong-Sung Chemical Co., Ltd	Shoe-Sloe	2003/08
Myeong-Bo., Ltd	Car Seat	2003/09
Postval(Lyvia)	Slab Stock	2003/09
Ok-Cheon Industrial	Car Seat	2003/11
Bill-Tech	Car Seat	2004/03
Xiagtan(China)	Discontinuous	2004/05
SIM(China)	Double Insulation	2004/05
Deok-Jin Industrial	Car Seat	2004/07
P&P Industrial	Car Seat	2004/08
Penglai(China)	Continous Panel	2004/10
Deok-Jin Industrial	Car IP	2004/10
Ok-Cheon Industrial	Car Seat	2004/12
Sin-il Tech Co., Ltd	Medical Appliance	2004/12
ECOS(Philippine)	Cold Room	2005/02
Sam-Hwan ENG	Bicycle Seat	2005/03
Dong-Won Seat	Head Rest	2005/06
U-Sung Urethane	Memory Foam Pillow	2005/06
U-Sung Tech Co., Ltd	Head Rest	2005/07
Dae-Yu PU Tech	Head Rest	2005/09
Seung-Ju Industrial	Continous Panel For Refrigeration	2005/09
Gang-Lim Giyeon	Discontinuous Panel	2005/11
Polycraft, India	Sandwich Panel	2006/05
Polycraft, India	PU Block	2006/06
Wit co., Ltd	Kimchi Refregerator	2006/07
Deok-Jin, Dang-jin	Car IP	2006/08
M Panel	Sandwich Panel	2006/10
Desmex, Mexico	Test	2006/12
Desmex, Mexico	Bumper	2006/12
Deok-Jin, KyeongJu	Car IP	2007/08

Reference list

Buyer	Application	Delivery Date
Samsung Algeria	Refrigerator Door and Cabi	2007/10
Samsung, Soju Factory	Refrigerator Cabi	2007/07
Busung Industrial	Car Seat	2007/03
Samsung C-Line	Cabi	2007/12
Polycraft India	Car Seat	2007/04
Sintex India	Sandwich Panel Production Line	2007/10
Polycraft India	Car Seat	2008/02
Hunter Telecom India	Cold Room Panel Procuction Line	2008/05
Hunter Telecom India	Cold Room Panel Procuction Line	2008/02
Sintex India	Cooling Conveyor	2008/12
NPF	Pipe Insulation	2008/12
Samsung	Cyclo Pentane	2009/01
Sini Steel	Pipe Insulation	2009/02
Gomotech	Dry Room	2009/04
Gomotech	Dry Room	2009/07
Samsung Algeria	Refrigerator Body Frame	2009/08
Samsung Algeria	Refrigerator Door	2009/08
Samsung Algeria	Cyclo Pentane Mix	2009/08
Pipe Tech	Pipe Insulation	2009/09
Samsung Suwon	Refrigerator Body Frame	2010/01
Samsung Suwon	Refrigerator Body Frame	2010/04
Samsung Gwangju	Refrigerator Door	2010/08
Shinwoo	Car Interior Material	2010/09
Gwang II	Pipe Insulation	2011/01
GU	Propeller for aero generator	2011/04
Aekyung	Testing Machine for raw material	2011/06
Ganglim	Insulation Tank for LNG carrier	2011/08
Furnistem	Mattress Line	2011/08
Mirae Tech	Car Console Line	2011/09
NSV	Mattress Line for insulation of vibration	2011/10

ULTIMATE MIXING EFFICIENCY WITH VARIOUS OPTIONS

HIGH PRESSURE FOAMING MACHINE

Quality Control Section

DUT has committed total quality control section for continuous improvement activity and will do our best to provide high quality products based on reliability equipment.

R&D Team (Research and Development)

DUT's R&D Team have skilled researchers who are specialists in the field of polyurethane and they are focused on our customer's needs, so the team applies customer's needs for the new products. DUT's R&D center is totally set by customers.

Q/A Team (Quality Assurance)

Q/A Team is being worked for 24 hours to process customer's requirements. And all the data from customers are stored in DUT's database so Q/A team can be handled most of requirements quickly.

Production Team

Production Team have mechanics who is being worked in this field over 20 years so they have a lot of tips to apply our technologies by technical equipments (Such as CNC and MCT).